

To connect WSU CS terminal server with local drive support for spooling, you need to perform the following steps.

First, you need to double click on the remote desktop icon to bring up the following window and enter the URL for the WSU CS terminal server (athena.cs.weber.edu:53243)



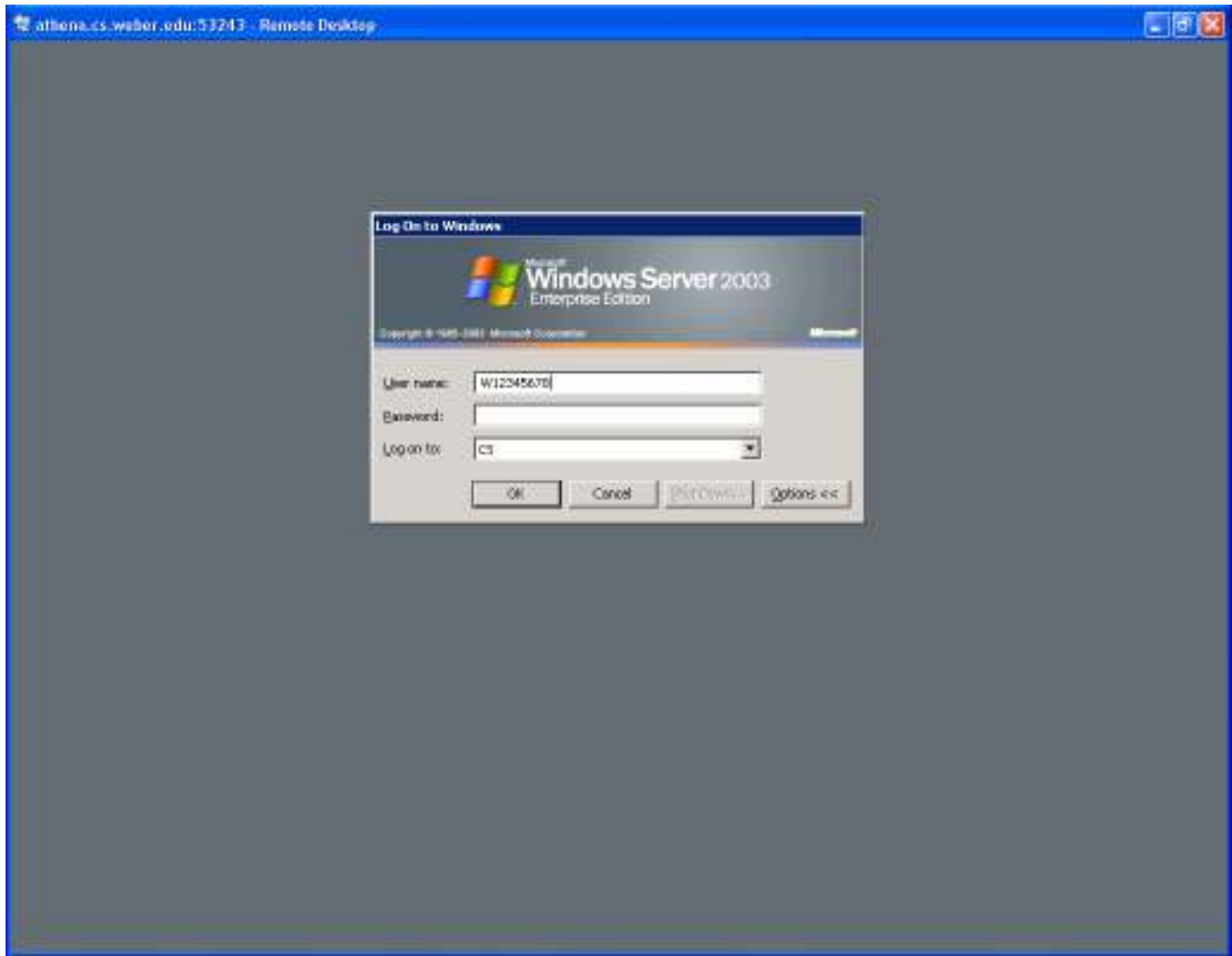
The window above is the basic Terminal Server window. In order to allow Terminal Server to map to your local drives, you need to click on the “ Options >> “ button and then click the “ Local Resources “ tab.

Make sure you have checked the “ Disk drives “ box. Normally it would be the only box checked. After insuring that you have the box checked, Click Connect.

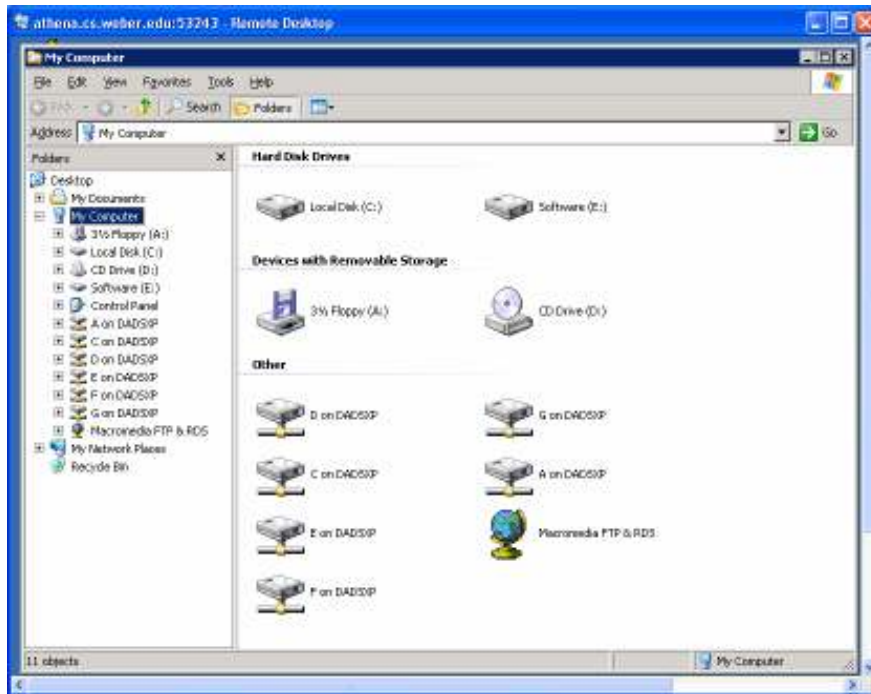
You may receive a warning message letting you know that you are allowing another computer to have access to your local disk drives. Click OK to continue on and connect to Terminal Server



At this point you'll see the standard Windows Server 2003 logon. Enter your CS lab user name and password. If you are logging on for the first time, the User Name will be your W number. Your initial password will be the last 4 digits of your W number followed by "cs!" For example if your student ID was W12345678, your initial password would be 5678cs!



After logging on, bring up a Windows Explorer window. In it, you should be able to see your local drives such as shown below.



If you can't see your local drives, then you need to repeat the connection process. Until you can see your local drives in an Explorer window, you won't be able to save or spool to them.

### Instructions for Logging into the Oracle Server

To access the CS Oracle server, you first need to connect to the Remote Terminal Server using the instructions above.

There is a desktop icon for the Oracle client, SQL\*Plus.

When you open the SQL\*Plus client you'll be presented with a dialog that looks like this:

**Log On**

**User Name:**

**Password:**

**Host String:**

Your user name is CS2550 + your Wildcat User Name – usually just your first name and last name, but it may have a number at the end.

The password is CS2550 + the last four digits of your W number.

The Host String is "titan".

SQL\*Plus doesn't have very good editing capabilities, so you will likely want to create and edit your queries in a text editor such as notepad and then paste them into SQL@Plus for execution.

When you are finished with SQL@Plus, type "exit" at the SQL> prompt.

## Instructions for Oracle Spooling

If you can see your drives, you need to then double click on the drive containing the folder that you want to save or spool into, and insure that the folder is there.

Once you have verified that you can see the local drive and folder that you are trying to access, you should be able to reference it in a save or spool via the syntax:

```
\\tsclient\\
```

For example in Oracle if you had a folder on your local C: drive named “work” and you were trying to spool to a file named “CS2550Spool3.txt” on that drive, you would use the following command:

```
spool \\tsclient\c\work\cs2550spool3.txt
```

if you had any spaces in the file or folder names, you would need to include the entire path in double quotes

```
spool "\\tsclient\c\work\cs2550 spool #3.txt"
```

---

If you are not connecting to Oracle via Terminal server, you'll need to spool to your local drive and folder directly with a command similar to:

```
Spool c:\work\cs2550spool3.txt
```